

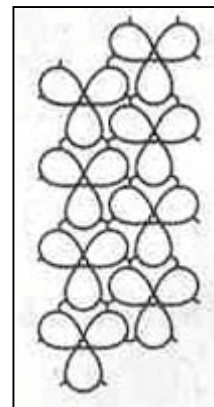
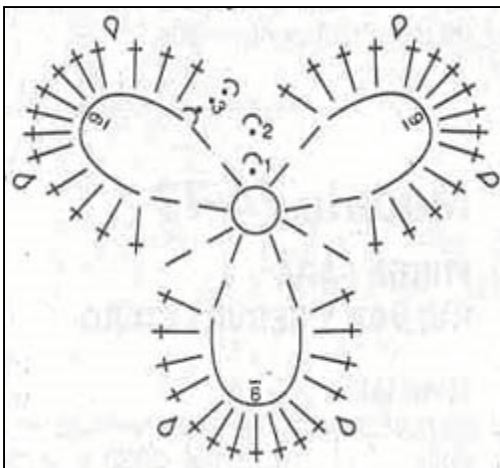
Russian Patterns

Napkin Rings

Suggested supplies:

Crochet Cotton Thread
size 10

Size 8 hook

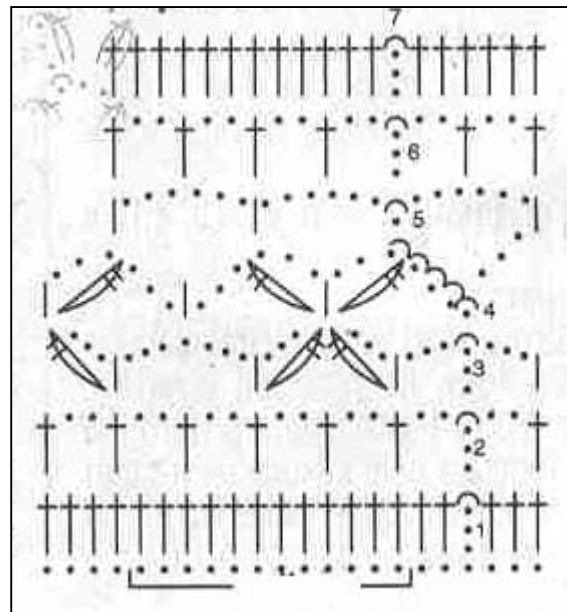


Alternate ideas:

Use the Christmas cotton thread (#10) which has the metal sparkle element.

Make a cloth band, a bit wider than the napkin ring and sew the crocheted ring onto the fabric.

Add ribbon along the bottom edge of the filet pattern ring.



 = chain (ch)

• = slip stitch (sl st)

X or † = single crochet (sc)*

T = half double crochet (hdc)

⌋ = double crochet (dc)

⌋⌋ = treble crochet (tr)

⌋⌋⌋ = double treble crochet (dtr)

∧ = sc2tog

∧∧ = sc3tog

∧∧∧ = dc2tog

∧∧∧ = dc3tog

∪ = 3-dc cluster

∪∪ = 3-hdc cluster/puff st/bobble

∪∪∪ = 5-dc popcorn

∪∪∪∪∪ = 5-dc shell

⊖ = ch-3 picot

⌋⌋ = front post dc (FPdc)

⌋⌋ = back post dc (BPdc)

⌋ = worked in back loop only**

⌋ = worked in front loop only**

* Both symbols are commonly used for single crochet

** Symbol appears at base of stitch being worked