

Textured: Slanted V's aka Wattle Stitch

(skip 3 base stitches)

sv = slanted v stitch: (sc, ch1, dc)

(original pattern)

Chain in multiples of 3 chains + 2.

See Wattle Stitch on next page.

G hook, 4-ply cotton, worsted weight.

30 ch = 7"

27 ch = 6"

24 ch = 5"

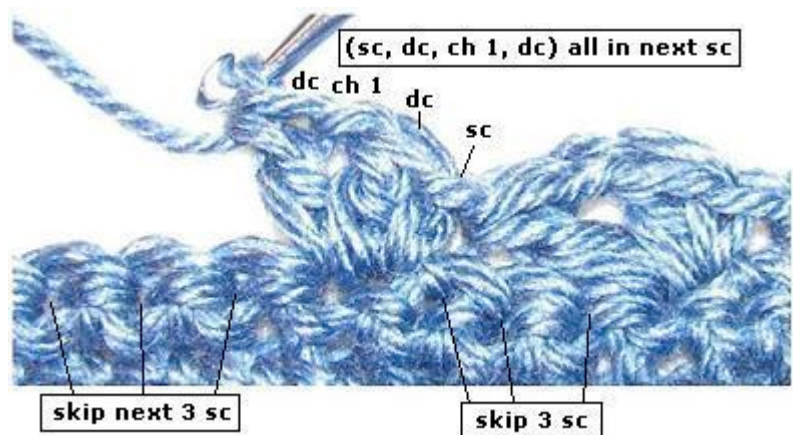


Note: If you want to add an edging, use the same SV stitch around all sides of the item. This will add 1/2" on all four sides. Overall, it will be 1" wider and higher with the edge (border) added.

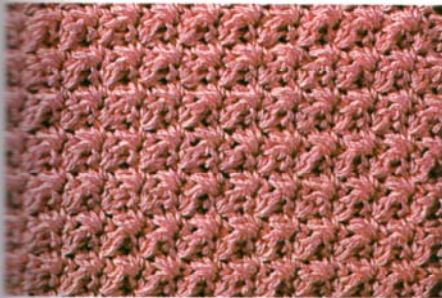
Textured: Slanted V's

(skip 3 base stitches)

The instruction (sc, dc, ch 1, dc) all in next sc is the way that the instruction is read in the pattern



Grit Stitch II

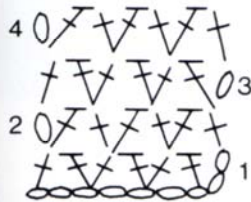


Multiple of 2 sts + 1.
(add 2 for base chain)

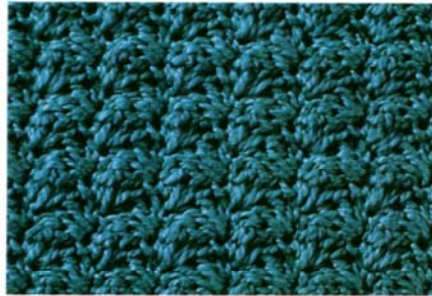
1st row: Skip 2ch (count as 1sc), 1dc into next ch, *skip 1ch, work [1sc and 1dc] into next ch; rep from * to last 2ch, skip 1ch, 1sc into last ch, turn.

2nd row: 1ch (counts as 1sc), 1dc into first st, *skip 1dc, work [1sc and 1dc] into next sc; rep from * to last 2 sts, skip 1dc, 1sc into top of tch, turn.

Rep 2nd row.



Sedge Stitch II

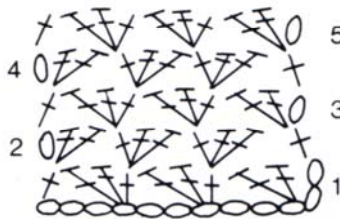


Multiple of 3 sts + 1.
(add 2 for base chain)

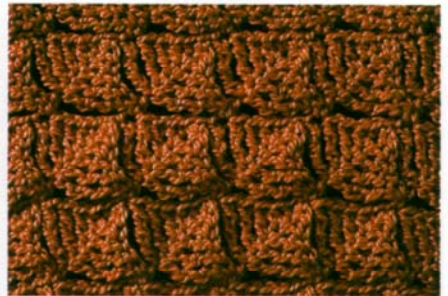
1st row: Skip 2ch (count as 1sc), 2dc into next ch, *skip 2ch, [1sc, 2dc] into next ch; rep from * to last 3ch, skip 2ch, 1sc into last ch, turn.

2nd row: 1ch (counts as 1sc), 2dc into first st, *skip 2dc, [1sc, 2dc] into next sc; rep from * to last 3 sts, skip 2dc, 1sc into top of tch, turn.

Rep 2nd row.



Wedge Stitch I



Multiple of 6 sts + 1.
(add 1 for base chain)

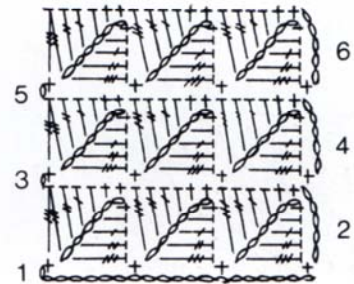
Special Abbreviation

WP (Wedge Picot) = work 6ch, 1sc into 2nd ch from hook, 1hdc into next ch, 1dc into next ch, 1tr into next ch, 1dtr into next ch.

1st row (wrong side): 1sc into 2nd ch from hook, *1WP, skip 5ch, 1sc into next ch; rep from * to end, turn.

2nd row: 5ch (count as 1dtr), *1sc into top of WP, over next 5ch at underside of WP work 1sc into next ch, 1hdc into next ch, 1dc into next ch, 1tr into next ch, 1dtr into next ch, skip next sc; rep from * omitting 1dtr at end of last rep when 2 sts remain, **[yo] 3 times, insert hook into last ch at underside of WP, yo, draw loop through, [yo, draw through 2 loops] 3 times, rep from ** into next sc, yo, draw through all 3 loops on hook, skip tch, turn.

3rd row: 1ch, 1sc into first st, *1WP, skip next 5 sts, 1sc into next st; rep from * ending last rep with 1sc into top of tch, turn. Rep 2nd and 3rd rows.



Sedge Stitch I



Multiple of 3 sts + 1.
(add 2 for base chain)

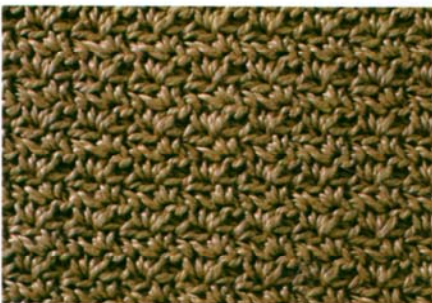
1st row: Skip 2ch (count as 1sc), work [1hdc, 1dc] into next ch, *skip 2ch, work [1sc, 1hdc, 1dc] into next ch; rep from * to last 3ch, skip 2ch, 1sc into last ch, turn.

2nd row: 1ch (counts as 1sc), work [1hdc, 1dc] into first st, *skip [1dc and 1hdc], work [1sc, 1hdc, 1dc] into next sc; rep from * to last 3 sts, skip [1dc and 1hdc], 1sc into top of tch, turn.

Rep 2nd row.



Wattle Stitch



Multiple of 3 sts + 2.
(add 1 for base chain)

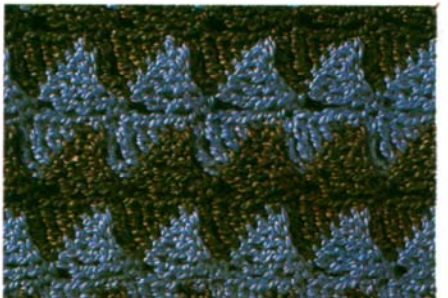
1st row: Skip 2ch (count as 1sc), *work [1sc, 1ch, 1dc] into next ch, skip 2ch; rep from * ending 1sc into last ch, turn.

2nd row: 1ch (counts as 1sc), skip first sc and next dc, *work [1sc, 1ch, 1dc] into next ch sp, skip 1sc and 1dc; rep from * ending with [1sc, 1ch, 1dc] into last ch sp, skip next sc, 1sc into top of tch, turn.

Rep 2nd row.



Wedge Stitch II



Worked as Wedge Stitch I.

Make base chain and work first row in color A. Thereafter work 2 rows each in color B and color A.